

Scouts Short Walk 2021

Approximately 2 miles

Please wear suitable footwear as the walk can be muddy and slippery when wet.

We go to the top of Upper Kingston Lane and up the Restricted Byway.



We pass a large sarsen stone on the left 'Rest and Be Thankful'. Can you see the Devil's footprint?



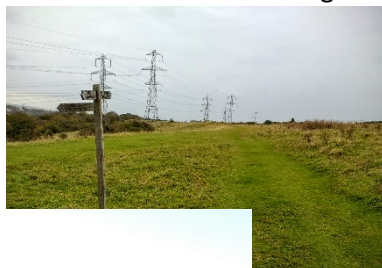
As our path curves right then left, we turn right through a field gate then turn left uphill on a wide grassy track



Just over the brow of the hill, at a guide post, we turn hard right on a gently descending grassy bridleway.



We pass a finger post on our left and in 25 metres bear right up a rising path.



At the top, we go through a footpath gate onto a descending path across a field.

On reaching houses we go through the kissing gate turn right down the road, back to Upper Kingston Lane, returning to the Scout hut

